

062 LCD Oscilloscope

DN062-07v04

Assembly Notes

1. Only install parts listed in the part list attached with the kit. Ignore components that appear in schematic but not in the part list.
2. First install all parts at the back. It is recommended to do soldering in following order:
 - 1) SMD ICs
 - 2) Small SMD components (i.e. resistors, capacitors, and inductors)
 - 3) Through-hole components.
3. Please pay special attention when installing following parts.
 - 1) The polarity of D1 and D7 (shown in Fig. 1 below). If D7 is placed wrong Q1 would be easily get burnt.

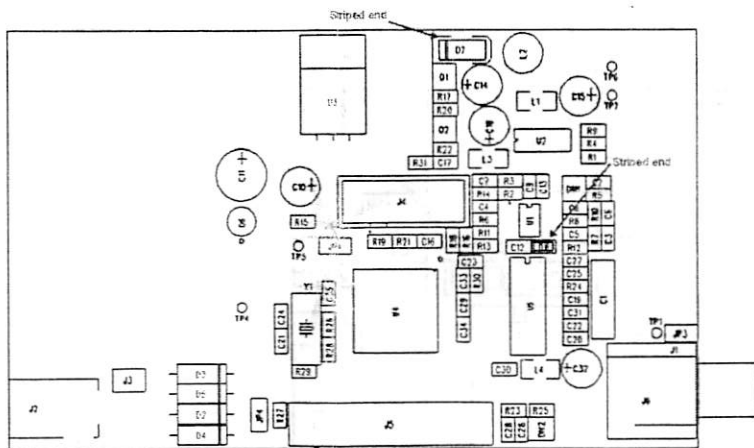


Fig. 1

- 2) Reverse C14, i.e. put its negative pin into the square pad. This is because of a design error.
4. After all parts at back have been installed check to ensure no errors. Apply +9V DC power supply to J2 (or J3) if every thing is fine. Measure voltage at TP5 to see if it is +5V.
5. If voltage at TP5 is ok then short JP1 and check the voltage again.
6. If no abnormal found, then go ahead to install the rest parts at the front.

You may need to cut some soldered leads on the front side flat to avoid conflict with the LCD panel, especially those of J4.

7. At installing LCD panel connecting pins should be soldered to LCD module first (Fig. 2 & 3). The 20 position pins should be placed at the side with signal labels. Since there are same holds on both side of the module it is easy to misplace pins to the other side. **AVOID THIS!!!**

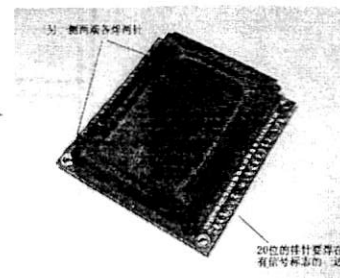


Fig. 2

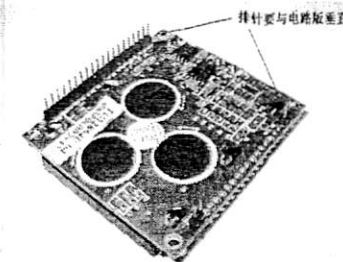
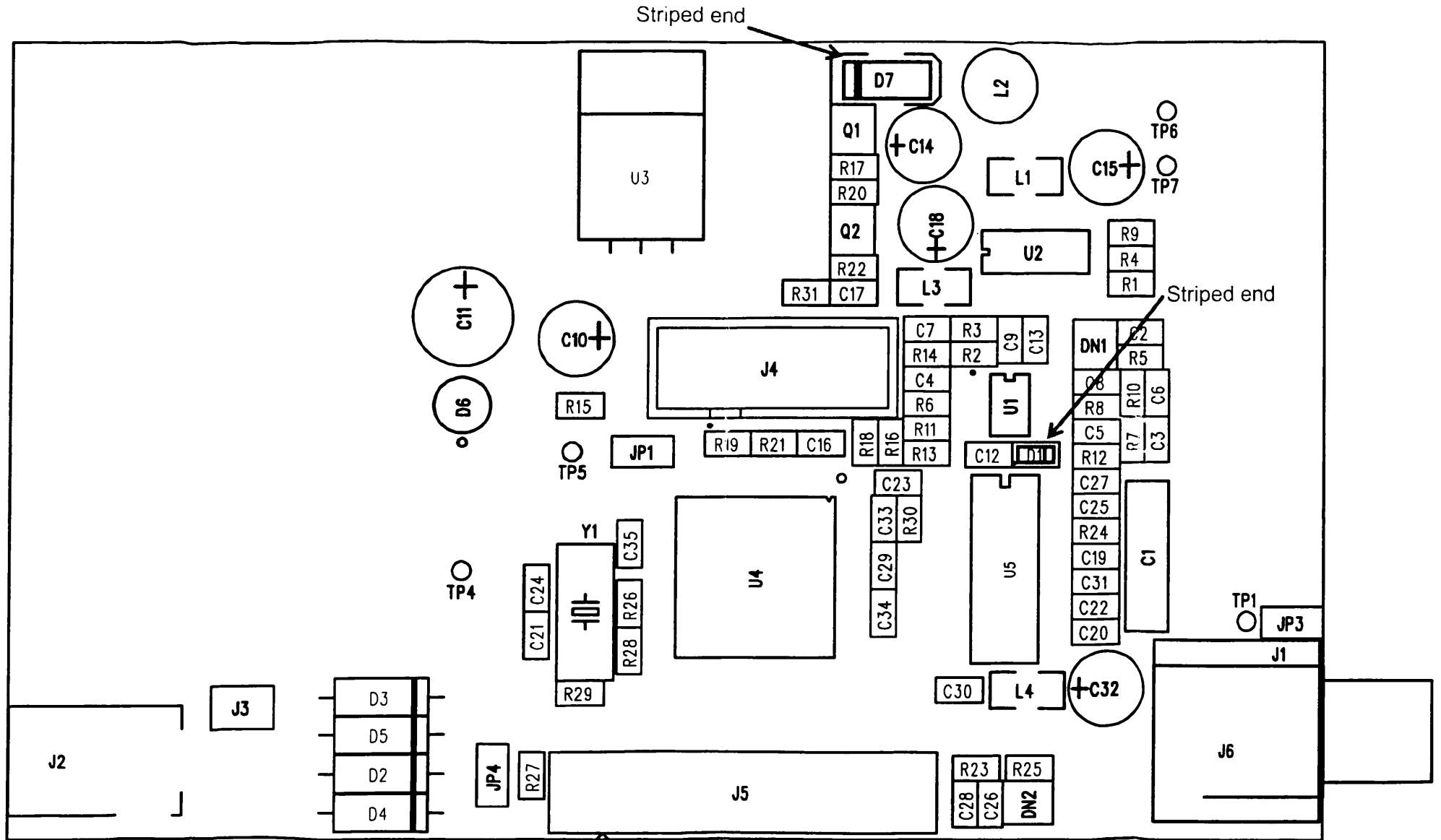


Fig. 3

8. After all parts have been installed power the scope up. If everything is OK you should see the scope displays firmware version information briefly and enters normal working state.
9. You need to make a simple probe yourself. This can easily be made with a segment of regular video cable. Cut a cable. Keep one end with RCA plug. Attach two clips to the other end. A simple probe is done.
10. It is recommended that only +9V power supply be used. Higher power supply voltage will make U3 (LM7805) hotter. In that case attaching a small heatsink to the IC is recommended.
11. In case you have problem with the assembled kit please go to www.jvetech.com for a detailed troubleshooting note. You can also write us at jvetek@gmail.com for technical support.



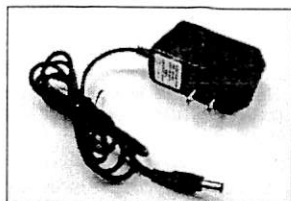
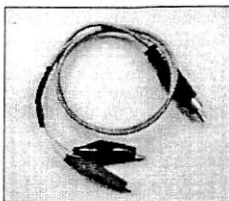
LCD Digital Storage Oscilloscope

Operating Instructions

Model: 06201

1. Accessories

- 1) Simple probe
- 2) AC/DC Power adapter (universal input voltage range)



2. Precautions

- 1) Do not apply voltage higher than the specified maximum input voltage to the instrument.
- 2) Do not attempt to directly measure wall power supply without a transformer.
- 3) Do not use power supply with voltage higher than 12V (DC or rms)

3. Panel Descriptions

Fig 1 shows the screen and various controls at the front panel. They are explained below.

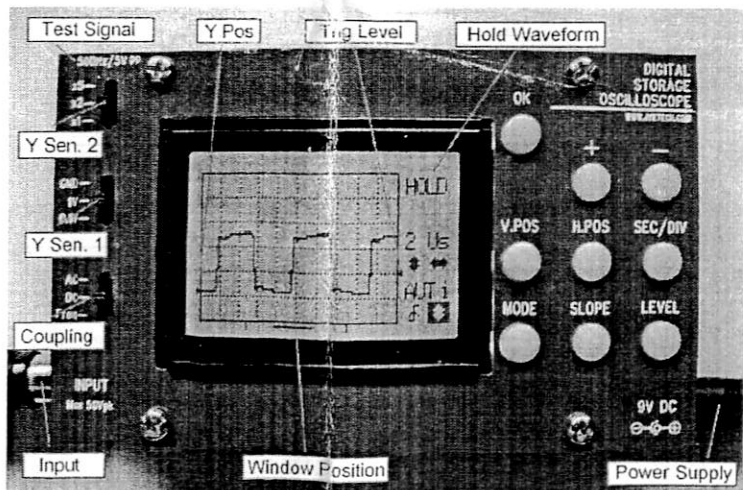


Fig. 1

Screen

- 1) Y position indicator – the left small triangle – shows 0V position
- 2) Trig level indicator – the small right triangle – shows trigger threshold voltage level
- 3) Window position indicator – reflects the displayed portion of sample memory.

- 4) "HOLD" is displayed when the oscilloscope is in HOLD state, which means capturing is halted until HOLD state is released.
- 5) Scope setting indicators - their meanings are shown in Fig. 2.

Power Supply Connector

Located at bottom right of the panel. 9 - 12V DC power supply (minimum 300mA capacity) can be connected to this connector.

Signal Input Connector

Located at bottom left of the panel.

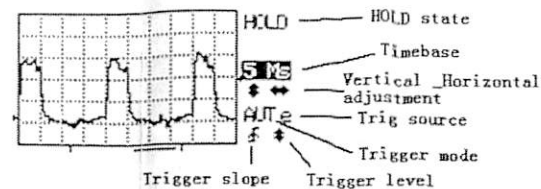


Fig. 2

Coupling Select Switch

This switch selects the coupling method to be used, i.e. AC coupling or DC coupling. When it is placed at "Freq. M." position input is connected to frequency measurement circuit. The input to scope is disconnected.

Y Sensitivity Select Switches

There are two switches for Y sensitivity selection. The first one selects base value. The second selects rate. The two settings are combined to determine actual Y sensitivity. For example, when switch Y SEN. 1 is put at "0.1V" position and switch Y SEN 2 is placed at "X2" position, this means actual Y sensitivity is 0.2V per division.

SEC/DIV

Selects horizontal timebase. When this button is pressed timebase display will be highlighted and timebase setting can be adjusted by pressing [+] and [-] buttons.

V.POS

Selects vertical position. When this button is pressed vertical position adjustment indicator will be highlighted and vertical position can be adjusted with [+] and [-] buttons.

H.POS

Selects horizontal position. When this button is pressed horizontal position adjustment indicator will be highlighted and the displayed portion of capture buffer can be adjusted horizontally with [+] and [-] buttons.

MODE

Selects trig modes. When this button is pressed trig mode adjustment indicator will be highlighted and trig mode can be selected with [+] and [-] buttons.

SLOPE

Selects trigger polarity. When this button is pressed slope select indicator will be highlighted. Trigger slope will be toggled between rising and falling. Alternatively, trig slope can be changed with [+] and [-] buttons when the indicator is highlighted.

LEVEL

Selects trigger level. When this button is pressed trig level adjustment indicator will be highlighted and trig level can be adjusted with [+] and [-] buttons. Press this button again will toggle trig source between internal and external.

OK

Switches oscilloscope between HOLD and RUN states. When this button is held down for more than 3 seconds the instrument will switch between Oscilloscope Mode and Frequency Meter Mode.

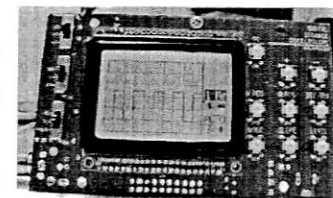


Fig. 3

4. General Measurement

Example 1 Observe the test signal (Practice for basic operations)

- 1) Connect power supply and probe.
- 2) Connect the red clamp to the test signal terminal located at top-left corner of the panel, as shown in Fig. 3.
- 3) Set Y sensitivity switch 1 (the middle one) to 1V position.

- 4) Set coupling switch to DC position.
- 5) Press [V.POS] button, adjust 0V indicator to the second last vertical scale as shown in Fig. 3.
- 6) Press [SEC/DIV] button, set timebase to 1ms.
- 7) Set Y sensitivity switch 2 (to top one) to X2 position. Waveform similar to that shown in Fig. 3 should be seen.
- 8) Change positions of Y sensitivity switch 2 you should see waveform amplitude changes accordingly.
- 9) Change timebase setting to 0.5ms, for instance, you should be able to see the signal high/low level is widened accordingly. Try other settings to explore.
- 10) Now put coupling switch to AC position you should see waveform is shifted down to a position where the Y Pos. indicator is at its middle point. This means what you see is a pure alternative signal.

Example 2 Observe saw signal (Learn how to use trigger modes)

Fig. 4 is a simple saw signal generator. We can use the scope to observe its output. Build the circuit according to Fig. 4 and connect power and the scope.

- 1) Select DC coupling. Set Y sensitivity switch 1 to 1V position and Y sensitivity switch 2 to X2 position. Adjust the 0V point to the second last vertical scale. Select 0.1ms timebase.
- 2) Connect probes as stated in Fig. 4. Power the circuit. You should see waveform similar to that shown in Fig. 5.
- 3) Select AUTO trigger mode and change trigger level. You should be able to observe that the waveform stabilize itself when it intersect with trigger level. Otherwise, it would jump back and forth.
- 4) Change trigger mode to NORM and vary trigger level. You should see that the waveform updates when there is intersection with trigger level. Otherwise, it remains unchanged.
- 5) Press [OK] to put the oscilloscope into HOLD state. "HOLD" indicator displays. Now you can shift the waveform back and forth to watch the rest portion of the signal. Press [OK] again will release the HOLD state and put the oscilloscope back to capture state.

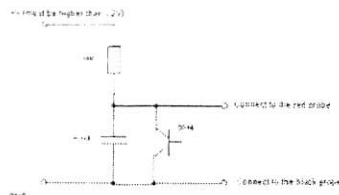


Fig. 4

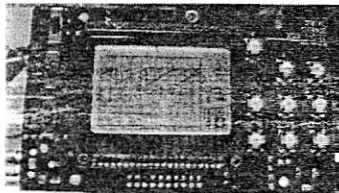


Fig. 5

5. How to Use the Frequency Meter

Place the coupling switch to "Freq. M." position and hold down [OK] for more than 3 seconds. This will make the instrument enter Frequency Meter mode. Signal frequency will be displayed. Please note that peak signal amplitude should be greater than 3V to validate the measurement because the instrument only takes TTL-level signals.

Hold button [OK] again will make it return to Oscilloscope mode.

6. How to Use External Trig

- 1) **Connection of external trig signal** Usually external trig signal can be connected to pin 12 of J5 through a 10K resistor (this resistor is for protection and is necessary). For convenience it can also be connected to the Test Signal terminal (protective resistor can be omitted in this case). To be able to do so pin 12 of J5 must be shorted to pin 4 of J5. When J5's pin 12 and pin 4 is shorted the Test Signal will be automatically disabled if external trig is selected. Note: remember to keep external trig signal within allowed range of 0 - +15V.
- 2) **Select trig source** Press [LEVEL] to highlight the trig level indicator. Press [LEVEL] again to toggle trig source. For external trig make sure external trig source is selected (letter "e" is displayed).
- 3) **Connect signal to be viewed to the scope input.**
- 4) **Adjust trig level to generate triggering.**

Note: The trig level for external trig is independent of that for internal trig and does not related to any Y sensitivity settings. Its minimum level is close to 0V (when the triangle is at bottom position) and maximum level close to +5V (when the triangle is at top position). To effectively use external trig users should have some idea about the frequency and amplitude of the external trig signal to be used.

7. How to Save Captures

- 1) Freeze the waveform you want to save by pressing [OK] (enter HOLD state).
- 2) Press [MODE] and use [+] or [-] to select one of the 6 buffers.

- 3) Press [OK] to save the frozen waveform to the buffer selected.

8. How to Display Saved Captures

- 1) Enter HOLD state by pressing [OK].
- 2) Press [SLOPE] and use [+] or [-] to select the buffer to be displayed.
- 3) Press [OK] to display the waveform in the buffer selected.

9. How to Send Screen to PC as Bitmap File

The oscilloscope screen can be transferred to PC as bitmap file through serial connection. The transfer protocol is Xmodem. Communication format is 38400bps, 8 data bits, 1 stop bit, no polarity, no flow control. To do this follow the steps below:

- 1) Connect the scope to PC via a serial level converter. (For how to make serial connection and level converter please refer to related documents and products at www.jytech.com website.)
- 2) Launch Windows HyperTerminal (or any other communication tool that can handle Xmodem protocol) and prepare it for file reception. Please make sure that the filename of received file has ".bmp" extension. (Suggestion: it is a good idea to put vertical scale info into filename for future reference.)
- 3) Put scope into HOLD state and display an interested portion of a capture on screen.
- 4) Press [LEVEL] then [OK]. Scope screen will be sent to PC as a bitmap file.

10. Features & Specifications

Oscilloscope	Max Sample Rate	5M samples/second *
	Resolution	8 bits
	Sample Memory Depth	256 bytes
	Analog Bandwidth	1MHz
	Vertical Sensitivity	100mV/Div - 5V/Div
	Input Impedance	1MO
	Max Input Voltage	50Vpp
	Coupling	DC/AC
	Trigger Modes	Auto, Normal, and Single
	Trigger Polarity	Rising/Falling
	Trig position	1/4 of sample buffer (fixed)
	External Trig Input Range	0 - 15V
	Save up to 6 captures to EEPROM	
	Display saved captures	
	Transfer screen as bitmap file to PC via serial port	
Backlit LCD display		
Frequency Meter	Power Supply Voltage	9 DC
	Power Supply Current	< 280mA
Overall	Frequency Range	5MHz
	Sensitivity	3Vpp
Overall	Dimension	110mm X 65mm X 25mm
	Weight	70 grams (board & probe)

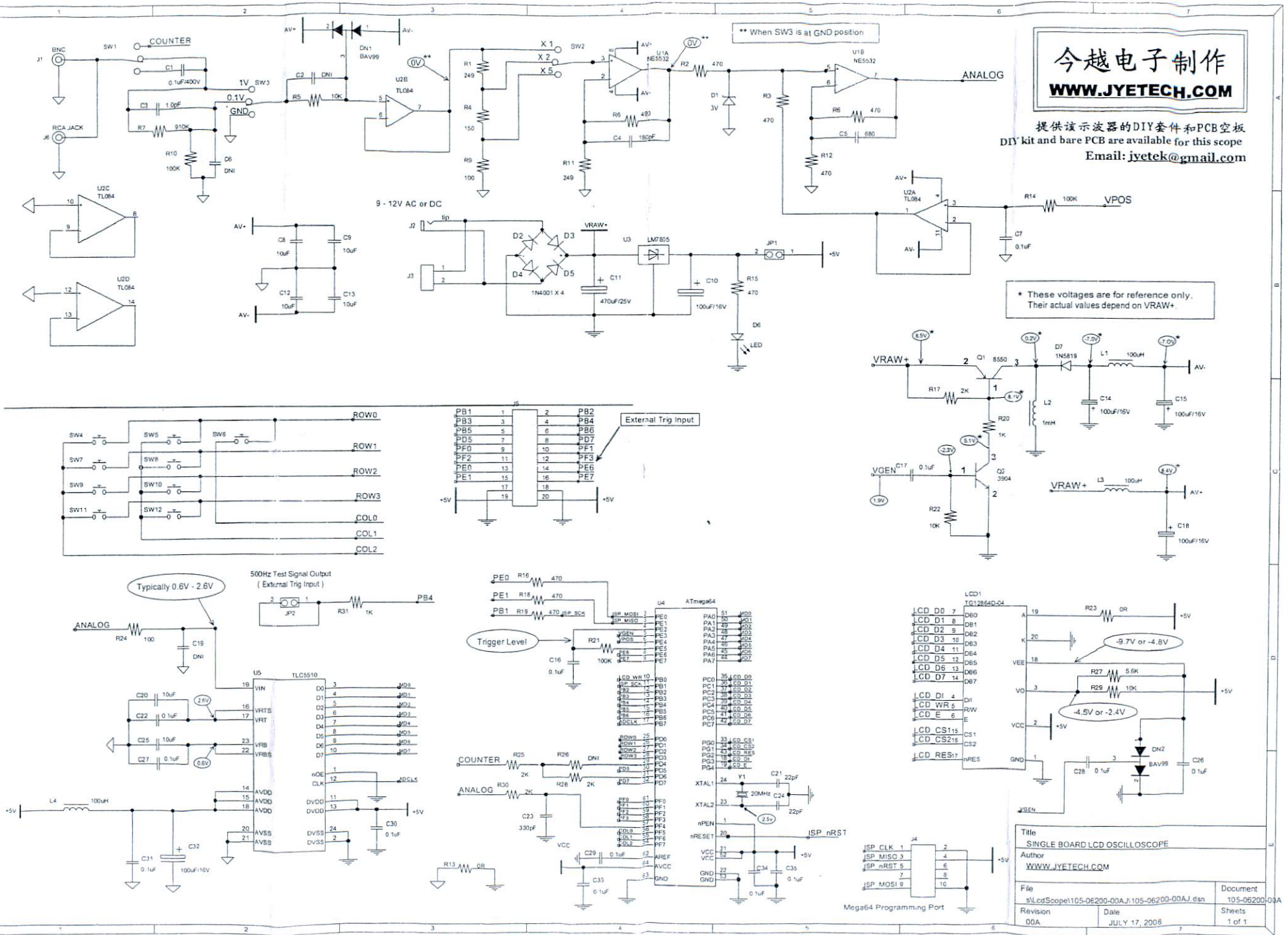
* 5Msps only works in AUTO mode

今越电子制作

WWW.JYETECH.COM

提供该示波器的DIY套件和PCB空板
 DIY kit and bare PCB are available for this scope
 Email: jyetek@gmail.com

* These voltages are for reference only.
 Their actual values depend on VRAW+.



Title		SINGLE BOARD LCD OSCILLOSCOPE	
Author		WWW.JYETECH.COM	
File	s\LcdScope\105-06200-00A\105-06200-00A1.dsn	Document	105-06200-00A
Revision	00A	Date	JULY 17, 2008
		Sheets	1 of 1

Bill Of Materials
P/N: 103-06201-06

ECR#: 0020

Last Modification Date: 2009. 08. 08

Category	Descriptions	Qty/Board	Designator/PCB Location	Package
Capacitor	0.1uF/100V	1	C1	[CAXIAL400]
Capacitor	1pF	1	C3	[0805]
Capacitor	0.1u	11	C7, C16, C17, C22, C27, C29, C30, C31, C33, C34, C35	[0805]
Capacitor	10uF	6	C8, C9, C12, C13, C20, C25	[0805]
Capacitor	100uF/16V	5	C10, C14, C15, C18, C32	[CAPPR_025X060]
Capacitor	470uF/16V	1	C11	[CAPPR_035X080]
Capacitor	680pF	1	C23	[0805]
Capacitor	22pF	2	C21, C24	[0805]
Diode network	BAV99 (mark: A7)	1	DN1	[SOT23]
Diode, zener	3.0V	1	D1	[0603/0805LED]
Diode	1N4001	1	D3	[DO41]
Jumper	15mm	1	D4	[DO41]
Diode	1N5819	1	D7	[DO_SMB]
Connector	Header, 2 X 5pin, 0.1"	1	J4	[HD1002X5]
Connector	POWERJACK-3.5	1	J2	[POWERJACK-3.5]
Connector	RCA jack	1	J6	[RCA-114]
LCD Module	TG12864D-04	1	LCD1	[TG12864D-04]
Inductor	100uH	3	L1, L3, L4	[1206/0805]
Inductor	1mH/500mA	1	L2	[CAPPR_025X060]
Transistor	8550 (mark: 2TY)	1	Q1	[SOT23]
Transistor	MMBT3904 (mark: 1AM)	1	Q2	[SOT23]
Resistor	249	2	R1, R11	[0805]
Resistor	470	7	R2, R3, R8, R12, R16, R18, R28	[0805]
Resistor	150	1	R4	[0805]
Resistor	10K	3	R5, R22, R29	[0805]
Resistor	499	1	R6	[0805]
Resistor	910K	1	R7	[0805]
Resistor	100	2	R24, R9	[0805]
Resistor	100K	3	R10, R14, R21	[0805]
Resistor	0R	3	R13, R23, R25	[0805]
Resistor	2K	2	R17, R30	[0805]
Resistor	1K	2	R20, R31	[0805]
Resistor	5.6K (depending on LCD used)	1	R27	[0805]
Switch	1P3T Switch, SS-13D11T	3	SW1, SW2, SW3	[SW_1P3T_13D11]
Switch	Tact switch, 6 x 6 x 8, 170gf	9	SW4, SW5, SW6, SW7, SW8, SW9, SW10, SW11,	[SW_TACT_4X6]
IC	NE5532	1	U1	[SOP127X_0600-8]
IC	TL084	1	U2	[SOP127X_0600-14]
IC	LM7805C/TO220	1	U3	[TO220]
IC	ATmega64-16AU	1	U4	[QFP080-64]
IC	TLC5510I	1	U5	[SOP127X_0800-24]
Crystal	20MHZ	1	Y1	[XTAL_HCM49]
Connector	1 X 20Pin, 2mm	1	ASSY1	
Connector	1 X 2Pin, 2mm	2	ASSY2	
PCB	109-06200-00A	1	PCB	
Screw	Pan head, M3 x 8	1	ASSY3	
Nut	M3	1	ASSY4	
Clip	Red, small size	1	ASSY5	
Clip	Black, small size	1	ASSY6	
Wire	Single core, shielded, AWG24, 400mm length (1185 or similar)	1	ASSY7	
Plug	RCA	1	ASSY8	
Wire	AWG24, stranded, 100mm len, red	1	ASSY9	
Wire	AWG24, stranded, 100mm len, black	1	ASSY10	
Heat shrink tube	Φ2mm, 40mm	2	ASSY11	
Heat shrink tube	Φ4mm, 40mm	1	ASSY12	
Heat sink	KF-032_16	1	ASSY13	
Panel	702-06201, front and back	1	ASSY14	
Standoff	M3 x 6 + 6	4	ASSY16	
Standoff	M3 x 15	4	ASSY17	
Screw	Screw, pan head, M3 x 6	8	ASSY18	
Switch Cap	KM1-A06	9	ASSY19	
Firmware	113-06201-080 (or later)	1	FW1	
Firmware	113-06202-020 (or later)	1	FW2	
Document	Schematic	1	DOC1	
Document	Assembly Notes	1	DOC2	
Document	Operating Instructions	1	DOC3	

Notes:

1. Do not install components not listed in this BOM even they are present in schematic
2. Only use component values as stated in this BOM.